

# Xaar Printhead Matrix

Physical Attributes	Unit	Xaar 128	Xaar 501	Xaar 502	Xaar 1003	Xaar 2002	Xaar Nitrox	Xaar Irix	Xaar Aquinox
Active nozzles	—	128	500	500	1000	2000	1000	128	2000
Print swathe width	mm	17.44	70.41	70.41	70.49	70.52	70.49	17	70.52
Number of fluid paths	—	1	1	1	1	up to 2	1	1	up to 2
Nozzle density (nozzles per inch)	npi	185	180	180	360	1 colour: 720 2 colours: 360	360	185	1 colour: 720 2 colours: 360
Maximum firing frequency (up to) <sup>1</sup>	kHz	8	27	9.5	36	36	48	8.3	48
Drop velocity <sup>1</sup>	m/s	6	7	7	6	6	6	6	6
Printhead weight (dry)	g	16	208 <sup>2</sup>	208 <sup>2</sup>	144	445	144	15.5	625
Dimensions: width depth height	mm	38 12 41	104 17 113 <sup>2</sup>	104 17 113 <sup>2</sup>	125 30 60	132 50 105	125 30 60	38 12 41	132 50 135
Fluid types <sup>1</sup>	—	Solvent Oil	UV Oil	Solvent Oil	Solvent UV Oil	Solvent UV Oil	Solvent UV Oil	Solvent Oil	Aqueous
Drop volume <sup>1</sup>	pL	40, 80	8	15	1, 6, 12, 40	6, 12, 40	3, 6, 12, 40	40, 80	6, 12
Firing mode	—	Binary	Greyscale	Greyscale	Greyscale or High Laydown	Greyscale or High Laydown	Greyscale or High Laydown	Binary	Greyscale or High Laydown
Max grey levels (up to)	—	2	6	6	8	8	8	2	8
Viscosity range <sup>3</sup>	cP	6 - 20	6 - 100	7 - 100	6 - 100	6 - 100	6 - 100	6 - 20	6 - 100

<sup>1</sup> Dependent upon printhead model & ink type   <sup>2</sup> Includes filter module

<sup>3</sup> Dependent on a combination of ink properties



Xaar 128



Xaar 501



Xaar 502



Xaar 1003



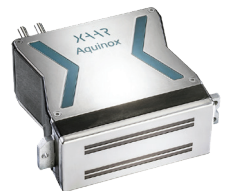
Xaar 2002



Xaar Nitrox



Xaar Irix



Xaar Aquinox