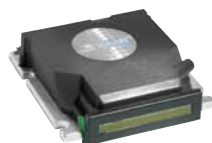


# Xaar Printhead Matrix

Physical Attributes	Unit	Xaar 128	Xaar 501	Xaar 502	Xaar 1003	Xaar 1003 AMP	Xaar 1003 AMx	Xaar 2001+	Xaar 1201	Xaar 5601
Active nozzles	—	128	500	500	1000	1000	1000	2000	1280	5680
Print swathe width	mm	17.4	70.5	70.5	70.5	70.5	70.5	70.5	27	116
Number of fluid paths	—	1	1	1	1	1	1	1 or 2	1, 2 or 4	1 or 2
Nozzle density (nozzles per inch)	npi	185	180	180	360	360	360	Single colour: 720 Dual colour: 360	1 or 2 colour: 600 4 colour: 300	Single colour: 1200 Dual colour: 600
Typical firing frequency <sup>1</sup>	kHz	4.25	8	7	6, 12, 27	6	6	6, 12, 27	30	100
Drop velocity <sup>1</sup>	m/s	5, 6, 7	7	5, 7	5, 6	7	7	5, 6	7	Up to 10
Printhead weight (dry)	g	15.5	208 <sup>2</sup>	208 <sup>2</sup>	144	144	144	445	95	320
Dimensions: width depth height	mm	37.2 11.3 40.8	104 17 113 <sup>2</sup>	104 17 113 <sup>2</sup>	125 30 60	125 30 60	125 30 60	132 50 105	52.7 45 76.2	141 45 69
Fluid types <sup>1</sup>	—	Solvent Oil	UV Oil	Solvent Oil	Solvent UV Oil	Solvent UV Oil	Solvent UV Oil	Solvent UV Oil	Aqueous Eco solvent UV	Aqueous UV
Sub-drop volume <sup>1</sup>	pL	40, 80	8 - 40	15 - 75 <sup>1</sup>	6, 12, 40	1 - 3	6 - 42	6, 12, 40	2.5	3 - 21
Firing mode	—	Binary	Greyscale	Greyscale	Greyscale or High Laydown	Greyscale	Greyscale	Greyscale or High Laydown	Greyscale	Greyscale
Max grey levels	—	2	6	4 <sup>3</sup> , 6	5 <sup>4</sup> , 8	8	6	5 <sup>4</sup> , 8	8	8

<sup>1</sup> Dependent upon printhead model and ink type   <sup>2</sup> Includes filter module   <sup>3</sup> GS15 S360 variant only   <sup>4</sup> GS40 variant only



Xaar 128



Xaar 501



Xaar 502



Xaar 1003



Xaar 1003 AM series



Xaar 2001+



Xaar 1201



Xaar 5601